



FORLAND MINI TRUCK—V SERIES

Professional cargo body

The large cargo box is equipped with the practical configuration of reinforcing rope hook, foot pedal, tailgate chain and side panel locking mechanism. The side panel of the cargo box and the bottom plate are reinforced, and the bottom plate is pressed, the strength is high, and the loading capacity is super strong.



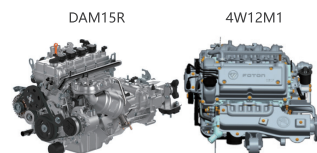
Easy and light operation

Electronic power steering : Electronic power steering is the standard configuration. It is light in steering and makes a enjoyable driving.



Powerful

It equips Foton G03-1.2L and Dongan 1.5L Euro V engine. The vehicle is well matched, the power is strong, the fuel consumption is low, the speed is fast, the noise is low, and the air conditioner is more powerful in summer.



Platform	FotonG03-1.2L	Dongan1.5L
Model	4W12M1	DAM15R
Displacement (L)	1.2	1.498
rated power (kW)	63	82
Maximum torque(N·m)	112	142
Maximum torque speed(rpm)	4000 ~ 4400	4500
Model feature	16V+DOHC	16V+DOHC+DVVT
Bore diameter(mm)	69.7	74
stroke (mm)	79	87.1
Rotating speed (rpm)	6000	6000
Emission compliance	Euro V	Euro V

Convenient maintenance

Front cover of the cabin be lifted to facilitate daily maintenance. Front seats can be lifted freely to facilitate daily maintenance and maintenance of the engine.



Product name			VQ	VQ	V	VQ
Basic information						
Product platform			0.5T	0.75T	0.75T	1.25T
Model			BJ1030V4J1-AA	BJ1020V3JV2-X	BJ1010V0JA3-2(Diesel)	BJ1030V5JL3-D5
Drive form			4×2	4×2	4×2	4×2
Driving side			Left	Left	Right	Left
Cab (mm)			Single row1475	Single row1475	Single row1475	Single row1475
Size parameters						
Wheelbase		mm	2000	2370	2456	2566
Vehicle size		mm	3860×1510×1960	4340×1510×1780	4470×1508×1905	4760×1600×1927
Cargo body interior size		mm	2200×1410×320	2700×1410×320	2800×1410×320	3050×1510×360
Front and rear track		mm	1260/1260	1260/1260	1260/1260	1260/1195
Weight parameter						
Load capacity		kg	500	750	750	1250
Curb weight		kg	971	1120	1250	1310
GVW		kg	1470	1870	2000	2560
Power system parameters						
Engine	Model		LJ465Q-2AE	LJ465Q-2AE/4W12M1	LL480QB	TNN4G15B/DAM15L
	Displacement (L)		1.498	1051/1200	5.375	1.499
	Emission compliance		Euro V	Euro IV	EuroI	EuroV
	Power	kw/rpm	45/5600	45/5600/63/6000	29/3000	82/5600/82/6000
	Maximum torque	Nm	85/3500	85/3500/112/4000	97/2100	143/4000/142/4500
Transmission	Model		MR508A	MR508A/MR63	5T70	MR70/DAT18R
Rear axle	Tonnage/speed ratio		1.0T/5.375	1T/5.125	1.5/5.375	2.0T/4.875
Performance parameter						
Maximum speed		km/h	110	90	90	110
Full load maximum slope		%	20%	20%	25%	20%
Minimum ground clearance		mm	170	170	170	180
Chassis system parameters						
Suspension	Suspension		Front independent suspension+4	Front independent suspension+5	3+5	Front independent suspension+5
Brake	Brake form		Hydraulic brake	Hydraulic brake	Hydraulic brake	Hydraulic brake
Steering	Power-assisted steering		Electric steering	No clutch assist	Electric power assisted to steering	Electric power assisted to steering
Tire	Model		155R13	165R13	175R14	175R14
Fuel tank	Volume	L	45	45	50	50
Frame	Form/size	mm	Semi-bearing	Semi-bearing	Bearing	Bearing
Function configuration parameter						
Air conditioning			○	○	○	○
Heater			●	●	●	●
Spare tire			●	●	●	●
Power steering			●	●	●	●
Air deflector			○	○	○	○
Load-sensing proportional valve			●	●	●	●
ABS			×	×	×	×
Airbag			×	×	×	×
Power window			×	×	×	×

Dashboard has more practical space



❶ **Lower left corner of the dashboard** : Can place mobile phones, cigarettes, cards, invoices, bills, change, etc.

❷ **Shelf** : Can be placed on ornaments, perfumes, electronic dogs, etc.

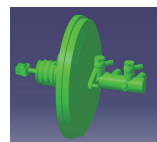
❸ **Storage table** : Can be placed with umbrellas, documents and other large items.

❹ **storage box** : Can place invoices, bills, flashlights, etc.

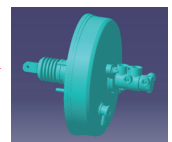
❺ **Retractable storage tank** : Can store business cards, cards, shopping receipts, change, etc.

Security upgrade

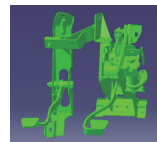
- The vacuum booster is upgraded to 10 inches, the braking force is stronger, the steering is lighter, and the braking distance is effectively shortened; the structure is double-chamber serial type, and one cavity failure does not affect the dynamic performance of the whole vehicle.
- The vacuum booster has an emergency auxiliary brake function to ensure that the vehicle is braked within the shortest distance in an emergency.
- The brake and clutch pedals are upgraded to a single unit, which enhances the structural strength. The brake pedal is upgraded from the secondary lever to the first-level lever, which improves the pedal force transmission efficiency and reduces the pedal stroke; the brake pedal area is increased and the comfort is improved.



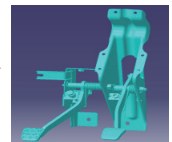
Previous 9 inch vacuum booster



Upgrade 10 inch vacuum booster



Previous split pedal



Upgrade the integrated pedal



Changsha Foton Vehicle Technology Co., Ltd

Telephone: +86-731-84075809

Email: overseas@foton.com.cn

Website: www.forland-global.com

Dealer information:

All photographs, illustrations, equipment and technical data in this brochure are based on the latest information available at the time of publication. We reserve the right to make changes at any time, without notice, in colors, materials, equipment, specifications and Models, and to discontinue Models or equipment.